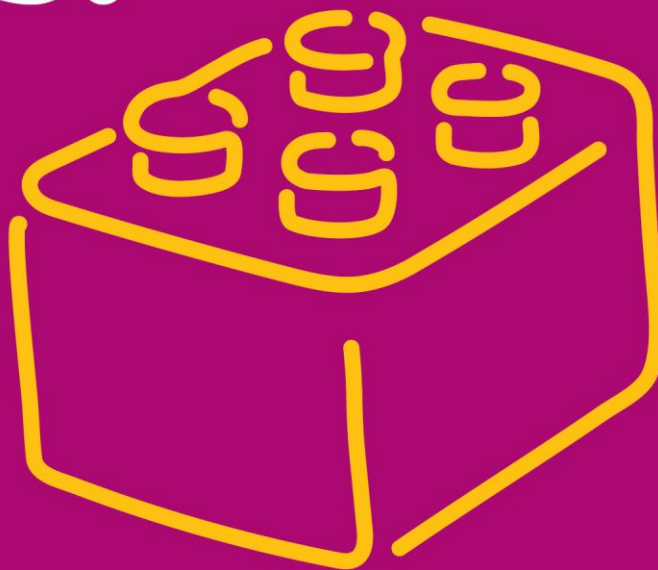


# Join us.



## Understanding and supporting behaviour workshop

**Are you a carer struggling to understand behaviours relating to Autism and other neurodiverse needs?**

**Are you searching for better ways to support these behaviours?**

**Creating Connections presents a two-day workshop to help build your skills and knowledge in supporting loved ones.**

This event is for eligible carers living in the Eastern Metropolitan region and council areas of Casey, Cardinia or Greater Dandenong who care for someone with a mental illness, autism or intellectual disability.

- Respite can be arranged if required.
- Lunch will be provided.
- Register your attendance by 23 January, 2018 via the link <https://www.research.net/r/9S3THWR>
- Your place will be confirmed by Thursday 25 January, 2018.

*Please note, carers who have a care recipient with an active NDIS plan can attend at a cost of \$55.*

**Cost**

**Free** for non-NDIS carers  
**\$55** for carers of someone with an active NDIS plan

**Date**

Thursday 8 February 2018  
Thursday 22 February 2018

**Time**

11am–2:30pm

**Venue**

Uniting lifeAssist  
Ground Floor, Training Room  
Building 4, Brandon Office Park  
530-540 Springvale Road  
Glen Waverley

**Get in touch**

T 03 9239 2500

**Uniting**